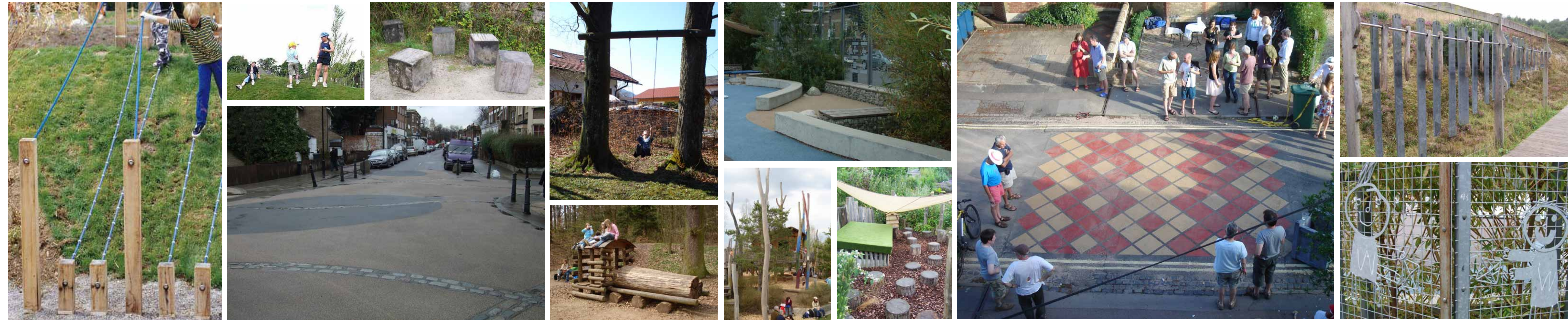


## VISION

To create a street which meets the aspirations of both current and future residents without compromising the ability of commercial/ industrial units to function. Bringing the neighbourhood together to design and maintain their environment to make it safer for children and prettier for all.



### OPPORTUNITIES

- Improve the look and feel of the street
  - Provide focal points
  - Allow cycle parking
- ### CONSTRAINTS
- Safety
  - Residents verses commercial/ industrial
  - Parking
  - Anti social behaviour
  - Utilities

### APPROACH

- Define entrances
- Break up linearity
- Engage with the youths
- Provide opportunities for informal play
- Introduce trees and planting
- Promote cycling and walking
- Involve local youths

### DESIGN CONCEPT

- Community focal point
- Gateways
- Introduce elements with play value
- Work with residents to green their environment
- Address issues highlighted through street audit - e.g. uneven paving



Layton Road

Slide down the bank

Reclaim the carpark - moveable seating

Section